

Duluth Campus

*Department of Anthropology,
Sociology & Criminology
College of Liberal Arts*

*228 Cina Hall
1123 University Drive
Duluth, Minnesota 55812-3306
Office: 218-726-7551
<http://www.d.umn.edu/socanth>
Email: socath@d.umn.edu*

8 October 2017

Anthropology of Food Week 7

"Eating-In: Commensality and Gastro-Politics"

Brief Midterm Exam Review



Canadian Thanksgiving

9 October 2017

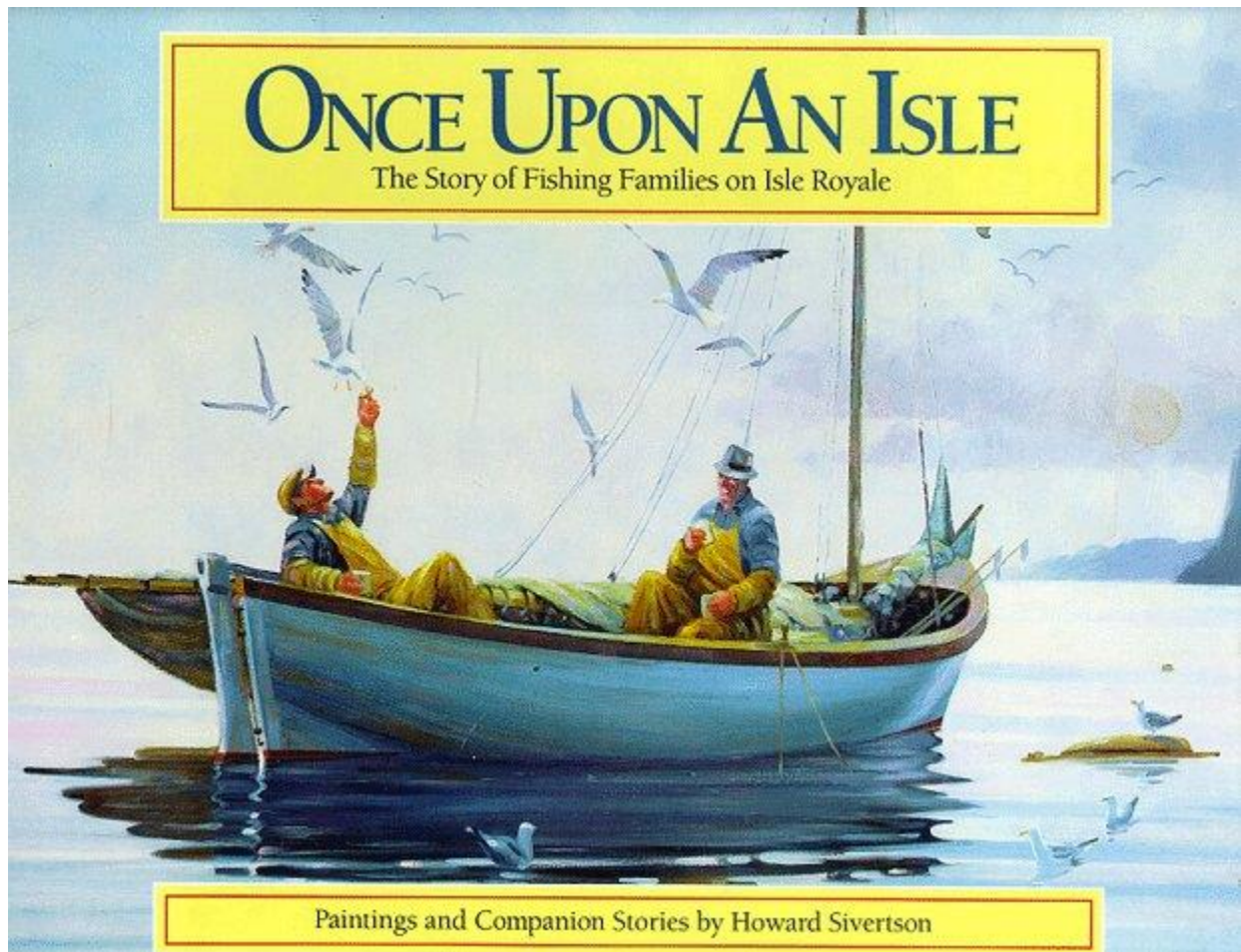
[Second Monday in October]

Thursday Stuart Sivertson will be our guest speaker. Don't miss him!

Stu is the retired President and CEO of Lake Superior Fish Co., whose grandfather came from Norway and began commercial fishing in Lake Superior in 1892. The Sivertsons have been prominent commercial fishermen on Lake Superior since the late 1800s.



You may be familiar with the family through the work of Stu's artist cousin, Howard Sivertson, a well-known regional artist (Cf., *Once Upon an Isle: The Story of a Fishing Family on Isle Royale*, Wisconsin Folk Museum, 1992).



On Tuesday we'll take whatever time you would like to review the Midterm Exam, so if you have questions, bring them along. If you took the exam, the results are in your **Moodle** Gradebook (check the upper left-hand corner of your **Moodle** HomePage under "Administration").

Prof's "grading" exams is a lot like an ump in Major League Baseball calling balls and strikes. The Major League rules are clear

<<http://www.d.umn.edu/cla/faculty/troufs/anthfood/afgrades.html#strikezone>> as are the stated criteria for written projects and exams <http://www.d.umn.edu/cla/faculty/troufs/comp3160/criteria_for_grading.html>.

But, in the end, they are both human judgments.

The biggest difference between a Major League Umpire calling balls and strikes and a professor calling a grade is that you get ejected from the baseball game if you argue balls and strikes (see Section 9.02 Official Baseball Rules

<http://mlb.mlb.com/mlb/official_info/official_rules/foreword.jsp> and one *should* really question the prof if they didn't like the call, and that is especially true for midterm exams as one can often learn quite a bit that is helpful for the Final Exam by looking over and discussing a midterm exam.

Maybe a better analogy would be judging **Olympic Figure Skating, or Gymnastics, or Ski Jumping, Diving** and the

like . . . <<http://www.d.umn.edu/cla/faculty/troufs/anthfood/afgrades.html#gymnastics>>.



If your style is to look at charts, the grading “chart” is at

<http://www.d.umn.edu/cla/faculty/troufs/anthfood/afgrades.html#gradingpolicies>.

So if, for whatever reason, you didn’t like “the call,” e-mail, or stop in Cina 2015.

Please pay attention to what the numbers mean in terms of the final course letter grade:

Numerical Example:

$$18/20 + 93/100 + 372/400 = 483/520 \\ = \mathbf{92.9\%}$$

= A

(the highest grade the UM system allows)

Review . . .



Writing Essays for Exams
Test Taking Strategies

Go back and look over your **Midterm Exam**, including your answers.

If you have any questions about the **Final Exam**, please raise them in class or in **Moodle**.

EXTRA CREDIT

If you didn't do quite as well as you might have liked on the Midterm Exam, or if you did better than you even hoped on the Midterm exam but want to “bank” some insurance points for your final course grade, think about doing one (or even two—one of each) of the optional extra credit papers.

There are **two Extra Credit options: (A) a case study**, and/or **(B) a review of a lecture** (such as one of the Nobel Conference 46 “Making Food Good” lectures, or the Harvard University School of Engineering and Applied Sciences Series on Food Science) **or a food film** (*other* than one of the films we see in class). For the review option you may also *compare* two or more food films. (Remember from Week 1, one of the main features of anthropology is that it is *comparative*?)

- **Details on the extra credit** are on-line at
<<http://www.d.umn.edu/cla/faculty/troufs/anthfood/afextracredit.html#title>>
- **The Nobel Conference 46 lectures** are on-line at
<<http://gustavus.edu/events/nobelconference/2010/archive.php>>
- **Harvard Food Science Lectures** from the School of Engineering and Applied Sciences, Harvard University
<<http://www.d.umn.edu/cla/faculty/troufs/anthfood/aflectures.html#harvardlectures>>
- **Other Lectures, including TED lectures** are on-line at”
<<http://www.d.umn.edu/cla/faculty/troufs/anthfood/aflectures.html#otherlectures>>



- A list of **food films** is on-line at
<<http://www.d.umn.edu/cla/faculty/troufs/anthfood/affoodfilms.html#title>>
- Details of the **Case Study Extra Credit Option** are on-line at
<<http://www.d.umn.edu/cla/faculty/troufs/anthfood/afextracredit.html#casestudy>>
- Details of the **Film/Lecture Review Extra Credit Option** are on-line at
<<http://www.d.umn.edu/cla/faculty/troufs/anthfood/afextracredit.html#filmreview>>

After a brief review of the Midterm Exam we'll finish having a look at *We Feed the World*, as part of our look at **“How People Get Their Food in Industrial Societies.”**



Your **Assignments and Activities listings** are available in the **Week 7 Block** of your **Moodle** folder.

This week the Assignments and Activities include . . .



[Reading Assignments for Week 7](#)



[Forum: Is Bob's Red Mill a Good Business Model?](#) (Due by the end of Week 7—Saturday, 14 October 2017)



- And don't miss "the gorilla" when watching the videos. If you didn't watch these last week, do it now . . .

Selective Attention Test

<http://www.youtube.com/watch?v=vJG698U2Mvo>

The Monkey Business Illusion

http://www.youtube.com/watch?v=IGQmdoK_ZFY



Go back and look over your [Midterm Exam](#), including your answers.

Review . . .



Writing Essays for Exams
Test Taking Strategies

And for fun, a **trivia question this week . . .**

In what region of Italy do Italians traditionally eat spaghetti with meatballs?



Answer

If have not yet heard about your “**Promissory Abstract**”, and **Working Bibliography**, you will be hearing about it shortly.

As usual, if you have any **questions** right now, please do not hesitate to post them on the **Moodle** “QUICKMAIL”, "Messenger" or e-mail troufs@d.umn.edu, or stop in before or after class across the hall in Cina 215.

Our tip of the hat this week goes to **Bob Moore**.

Best Regards,

Tim Roufs

<<http://www.d.umn.edu/~troufs/>>